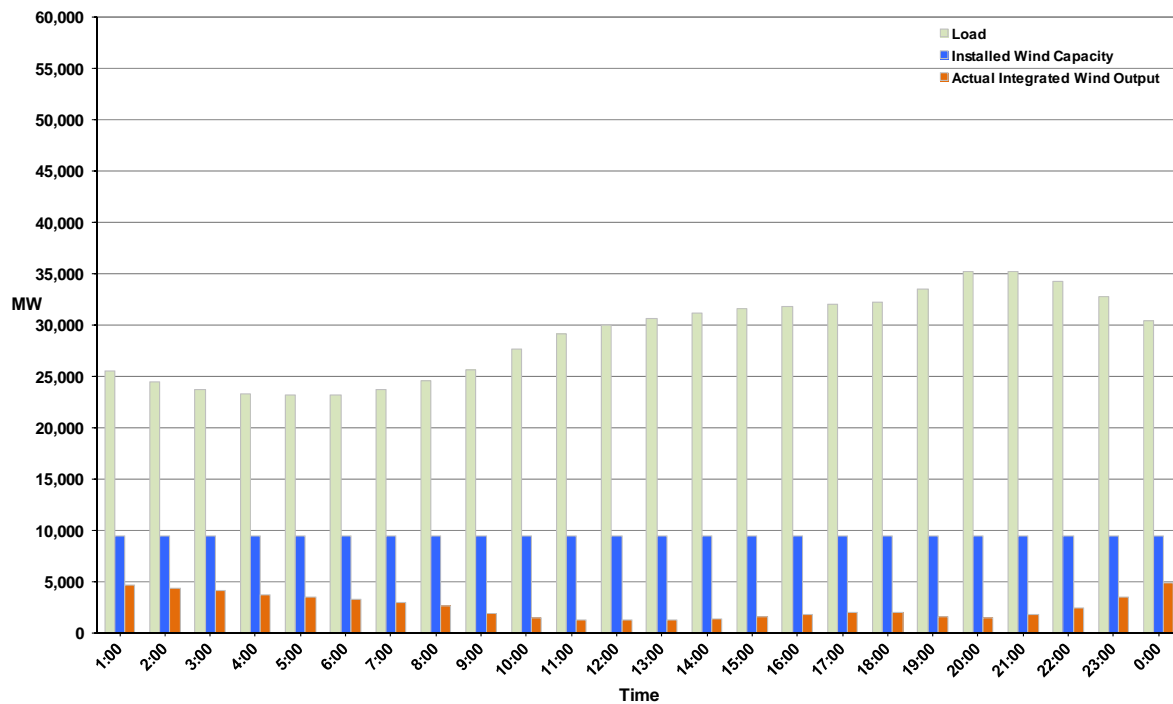




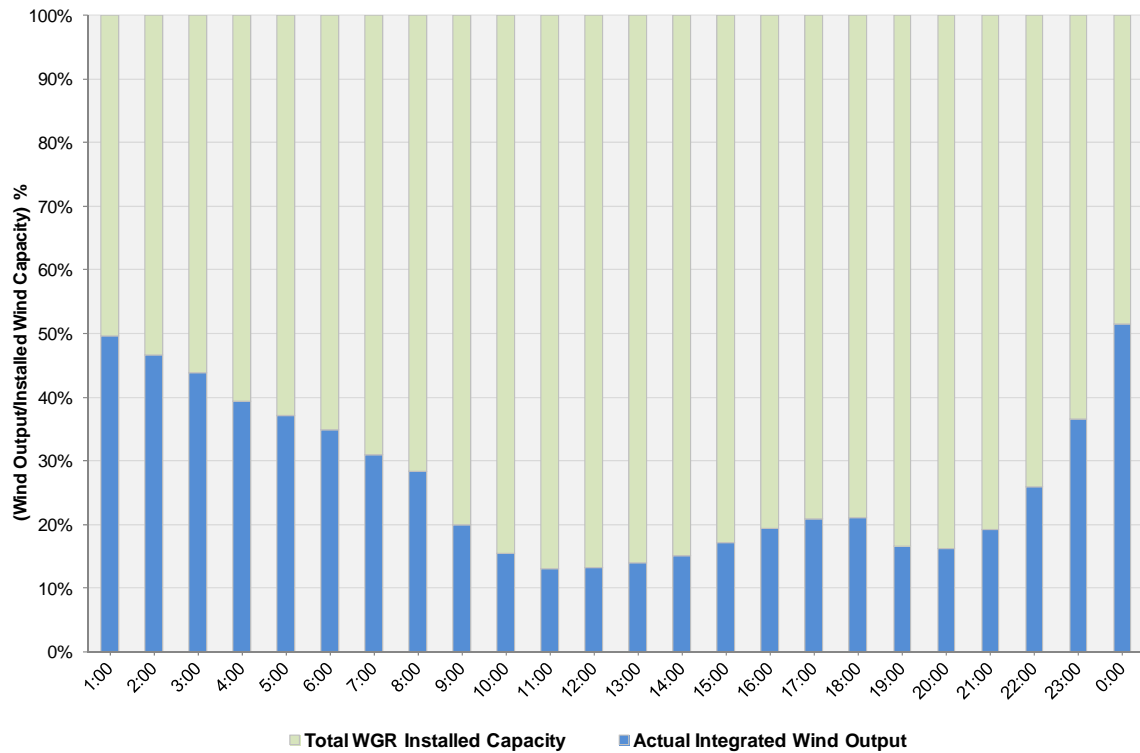
ERCOT Grid Operations Wind Integration Report: 11/06/11

Peak Load	35,220 MW
Load Peak Hour	20
Wind over Peak	1,532 MW
Wind Record 10/07/11	7,400 MW
Max Wind Value	5,237 MW
Wind Peak Time	22:59
Wind Integration %	17.90%

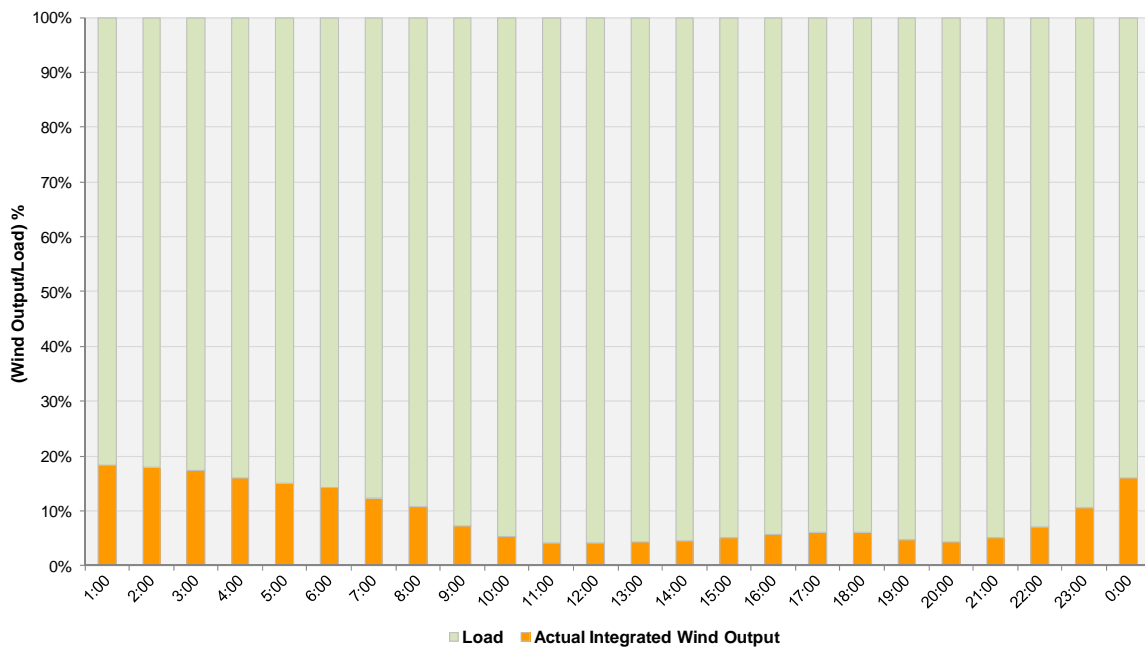
Hourly Average Actual Load vs. Actual Wind Output
11-06-2011



Actual Wind Output as a Percentage of the Total Installed Wind Capacity
11-06-2011



Actual Wind Output as a Percentage of the ERCOT Load
11-06-2011



ERCOT Load vs. Actual Wind Output 10/30/2011 - 11/6/2011

